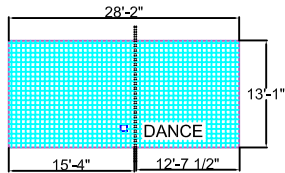


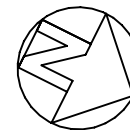
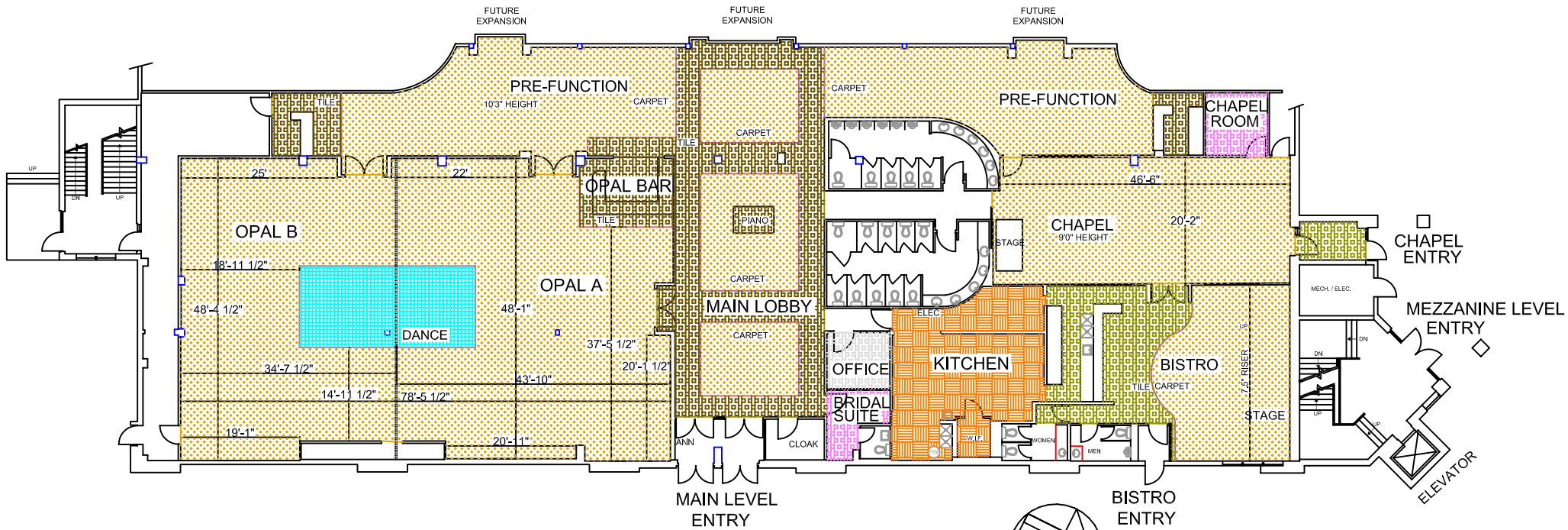
MAIN LEVEL



OPAL B BALLROOM
48'4" X 34'8"
10' 5" TILE HEIGHT
8' 8" BULKHEAD HEIGHT

OPAL A BALLROOM
48'1" X 43'10"
10' 5" TILE HEIGHT
8' 8" BULKHEAD HEIGHT

CHAPEL
46' 6" X 20' 2"
9' 0" TILE HEIGHT



MEZZANINE LEVEL

